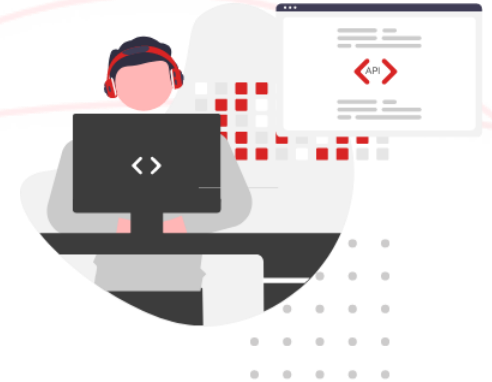


API's – How to leverage them in the OTC Process ?

怎样在订单流程中使用API?



WebHook event subscription available



Customer prepares & Issues purchase order
客户生成采购订单 (PO)

ExxonMobil creates sales order
EM生成销售订单 (SO)

ExxonMobil confirms order
EM确认订单

ExxonMobil schedules order for shipment
EM安排装运

ExxonMobil ships order
EM发货

Customer receives delivery
客户收货

ExxonMobil issues invoice
EM开具发票

Customer receives invoice
客户收到发票

Customer pays invoice
客户付款

GET

- Account Listing
- Delivery Locations
- Delivery Location Details
- Product Catalogs
- Account Partners
- Delivery Date Range
- Optimum Size
- Order Guidelines
- Consignment Inventory
- Contract List

POST

- Standard Orders
- Orders from Reference
- Consignment Fill-Up
- Railcar Consumption

GET

- Order Details
- Order Listing

PATCH

- Order Changes
- Order Cancellation

GET

- Shipment Details
- Shipment Tracking Status

GET

- Invoice Details
- Account Invoice List

GET

- Available Documents
- Document Download